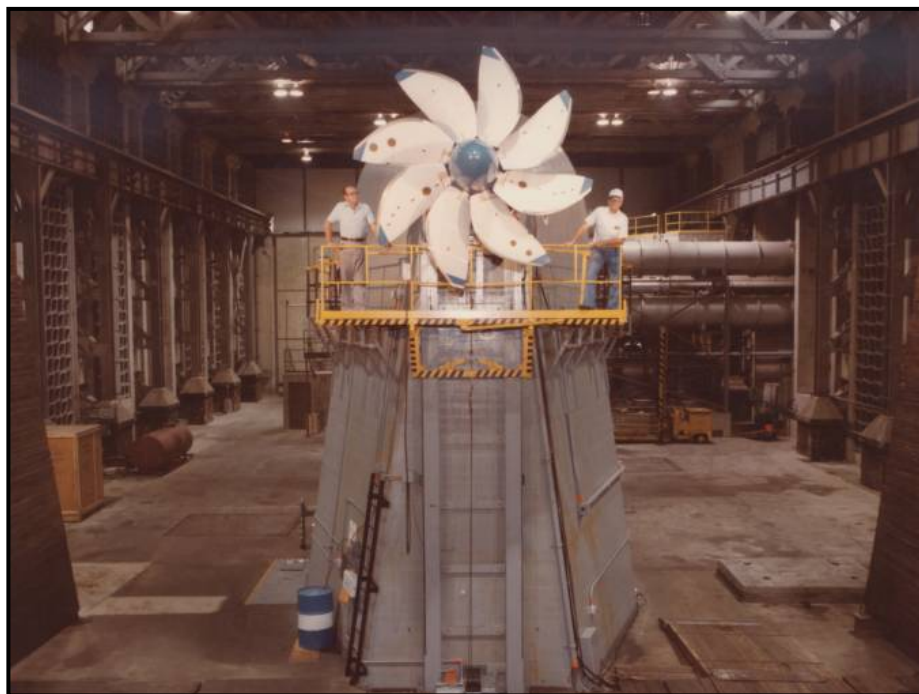




Facility Factsheet

Propeller Test Facilities



Description:

Three electrically driven whirl test stands are used to determine propeller (or other rotating device) performance at various rotational speeds. These test stands are capable of performance and endurance testing of propellers to 10,000 horsepower and 10,800 rpm. Horsepower absorbed, thrust generated, and resulting blade stresses and deflections may be determined for various blade pitch angles and speeds.

Purpose:

To provide performance and endurance testing of propellers (or other rotating devices) at various speeds and horsepower.

Products:

Validation of propeller and fan design concepts
Test data for design/redesign of composite fan blades and fan containment systems

Availability:

Available for U.S. Government agency use, DoD contractors and dual use/defense conversion use.